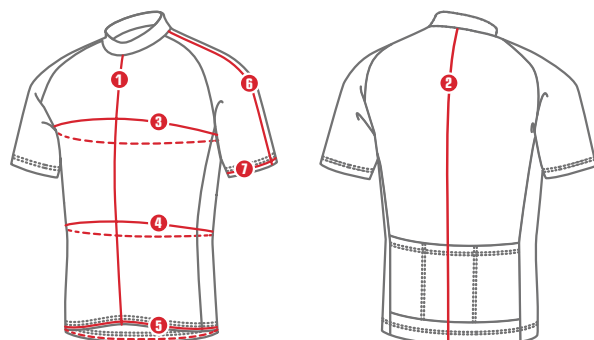
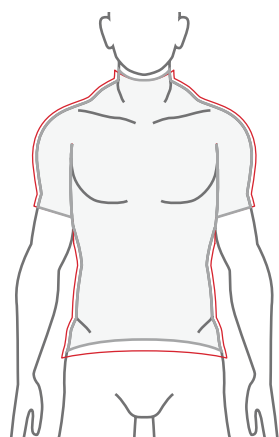


Sketches have been drawn to depict general adjustment from Elite Skin Fit to Sport Fit for each garment.

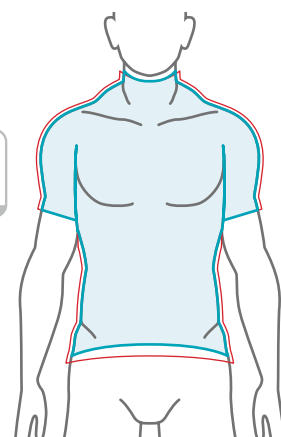
Take a thorough look at the following charts to find the fit and size that suit you best. To understand the featured fits, read carefully the details below.



**ELITE SKIN FIT**  
Excellent body contour



**ELITE FIT**  
1" shorter  
2 Same length  
3 4" tighter  
4 3" tighter  
5 2" tighter  
6 Same length  
7 1/2" tighter

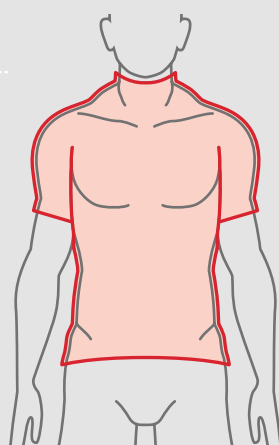


**BASIC MEASUREMENTS**



**PERFORMANCE FIT**

- 1 Front length
- 2 Back length
- 3 Chest circumference
- 4 Waist circumference
- 5 Hem circumference
- 6 Sleeve length
- 7 Sleeve cuff circumference

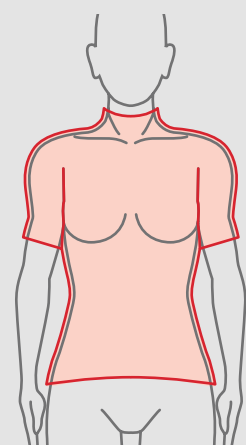


**BASIC MEASUREMENTS**



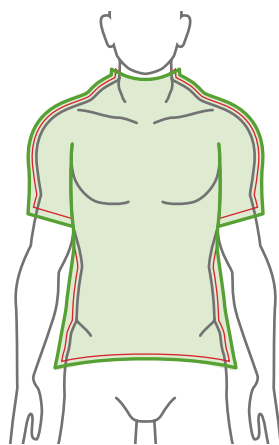
**WOMEN PERFORMANCE FIT**

- 1 Front length
- 2 Back length
- 3 Chest circumference
- 4 Waist circumference
- 5 Hem circumference
- 6 Sleeve length
- 7 Sleeve cuff circumference



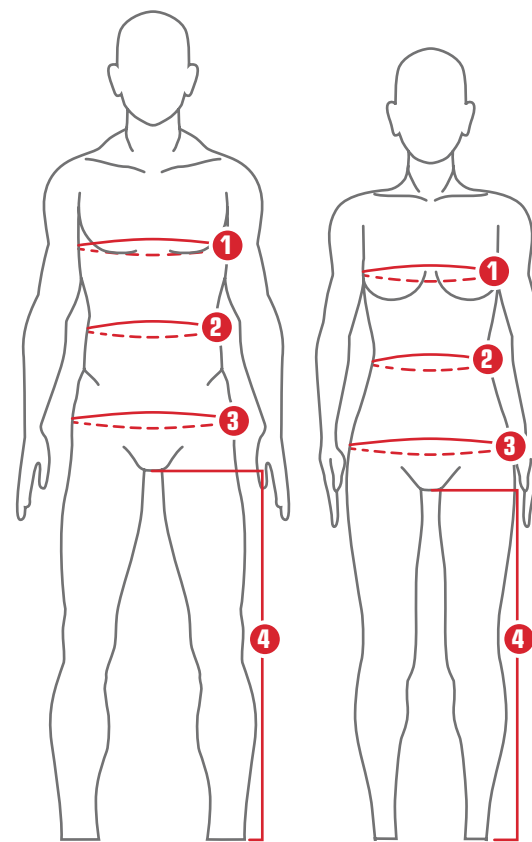
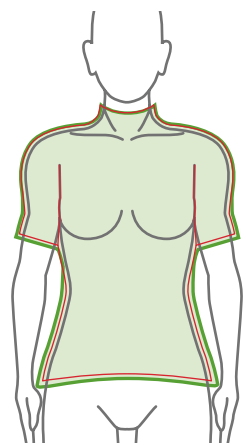
**SPORT FIT**

- 1 1/2" longer
- 2 1/2" longer
- 3 4" larger
- 4 4" larger
- 5 4" larger
- 6 1" longer
- 7 1/2" larger



**WOMEN SPORT FIT**

- 1 size larger than ProFit
- 1" longer
- 2 1" longer
- 3 2" longer
- 4 3" longer
- 5 2" longer
- 6 1/2" longer
- 7 3/4" larger



**MEN SIZE CHART (IN.)**

UNISEX	3XS	XXS	XS	S	M	L	XL	XXL	3XL
1 CHEST	32	34	36	38	40	42	44	46	48
2 WAIST	26	28	30	32	34	36	38	40	42
3 BUTTOCKS	32	34	36	38	40	42	44	46	48
4 LEG LENGTH	29	29	29	30	31	32	32	32	32

**WOMEN SIZE CHART (IN.)**

UNISEX TOPS	-	3XS	XXS	XS	S	M	L	XL
UNISEX BOTTOMS	-	XXS	XS	S	M	L	XL	XXL
WOMEN	XXS	XS	S	M	L	XL	XXL	3XL
1 CHEST	30	32	34	36	38	40	42	44
2 WAIST	25	26	27	29	31	33	35	37
3 BUTTOCKS	33	35	37	39	41	43	45	47
4 LEG LENGTH	29	29	29	30	31	31	31	31

\*Buttocks are measured 4 inches below the waist.

**KIDS • TEENS SIZE CHART (IN.)**

	6	8	10	12	14
	JRXS	JRS	JRM	JRL	JRXL
CHEST	24 1/2	26 1/2	27 1/2	29	30
WAIST	20 1/2	22 1/2	23 1/2	24 1/2	25 1/2
BUTTOCKS	24 1/2	28	29 1/2	31	32 1/2
BODY LENGTH	20 1/2	22 1/2	25 1/2	28	29

\*This chart is for information only in order to find the best suitable size. Individuals have respective measurements and preferences. For this reason, this chart cannot guarantee perfect fit.

**SOCKS SIZE CHART**

SOCKS SIZE	SHOE SIZE			
	LOUIS GARNEAU	MEN	WOMEN	EURO
S	5-7	6-8	36-38	
M	7-9	8-10	38-41	
L	9-11	10-12	41-44	
XL	11-13	12-14	44-48	
SM	5-9	6-10	36-41	
LXL	9-13	10-14	41-48	

**GLOVES SIZE CHART (IN.)**

ADULT SIZE	HAND CIRCUMFERENCE	
	MEN	WOMEN
XS	6 - 7	-
S	7 - 8	6 - 7
M	8 - 9	7 - 8
L	9 - 10	8 - 9
XL	10 - 11	-

**SHOE COVER SIZE CHART**

SHOE COVER SIZE	SHOE SIZE
S	39 - 40 - 40,5 - 41
M	41,5 - 42 - 42,5 - 43
L	43,5 - 44 - 44,5 - 45
XL	45,5 - 46 - 47 - 48 - 49 - 50

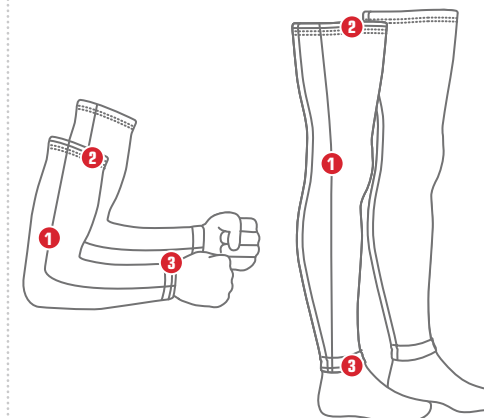
**SHORTS AND BIB INSEAM**

SIZE	MEASUREMENT (IN.)
XS	M - 1"
S	M - 1/2"
M	MEASUREMENT (DEPEND ON STYLE)
L	M + 1"
XL	M + 1"
XXL	M + 1"

\*Inseam measured when worn.

**ADULT HELMET**

SIZE	HAT SIZE	IN.	CM
S	6 1/2 - 7	20 1/2 - 22	52 - 56
M	7 - 7 3/8	22 - 23 1/4	56 - 59
L	7 3/8 - 7 3/4	23 1/4 - 24 1/2	59 - 62



**ARM WARMERS SIZE CHART (IN.)**

	XXS	XS	S	M	L	XL	XXL
1 LENGTH	15	16	17	18	18 1/2	18 1/2	18 1/2
2 ARM OPENING	8 3/4	9 1/2	10 1/4	11	11 3/4	12 1/2	13 1/4
3 WRIST OPENING	4 1/4	5	5	6 1/8	6 3/8	7 1/8	7 1/2

**LEG WARMERS SIZE CHART (IN.)**

	XS	S	M	L	XL	XXL
1 LENGTH	23 1/2	24 3/8	25 3/8	26 3/8	26 3/8	26 3/8
2 THIGH	15 1/2	16 1/4	17 1/4	18 1/4	19 1/4	20
3 ANKLE	6	6 1/4	7 1/4	7 3/4	8 1/4	8 3/4

\*Each category is designed to provide a fit adaptable to your needs. They focus on fabrics' specific features and properties.